



Disability Network | Eastern Michigan

RecConnect: Adaptive Recreation & Wellness

Adaptive Cycling 2025

Open House

May 20 (4-7 pm)

Independence Oaks County Park, Clarkston

- Join us for our kick off event! We will have a variety of adult adaptive cycles to try.
- All riders must wear a helmet. Bring your own or wear one of ours!
- Sign up and drop in any time between 4 & 7 pm.

Adaptive Cycling

Choose a date, bike, and 1-hour time slot. Bring your helmet or wear one of ours!

Clarkston

- **May 29** (2-6 pm)
- **June 5 or 12** (2-6 pm)
- **August 7, 14, or 21** (2-6 pm)
- **September 18 or 25** (2-6 pm)
- **October 9 or 16** (2-6 pm)

Fort Gratiot

July 23 (1-7 pm)

Lapeer

August 13 (2-6 pm)

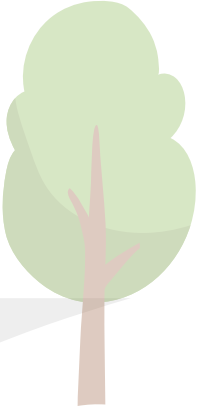


Scan this QR code or visit <https://DNEM.RecDesk.com> for more information about adaptive cycling.

Contact the RecConnect team with questions or accommodation requests:



REC-IT@DNEMichigan.org
(586) 268-4160



OAKLAND COUNTY PARKS

