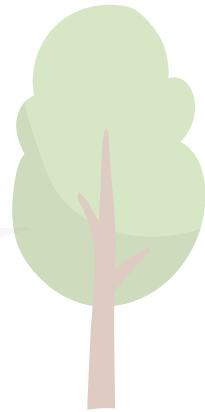




Rec-Connect

ADAPTIVE RECREATION AND WELLNESS

A Disability Network Eastern Michigan Program



Adaptive Cycling 2026

Choose a date, bike, and 1-hour time slot. Bring your helmet or wear one of ours!

Clarkston

Independence Oaks County Park

- **May 14, 21, & 28** (2-6 pm)
- **July 9 & 30** (2-6 pm)
- **August 27** (2-6 pm)
- **September 24** (2-6 pm)
- **October 1 & 8** (2-6 pm)

Lapeer

Rowden Park

August 11 (2-6 pm)

Fort Gratiot

McIntyre Park

August 3 (2-6 pm)



Scan this QR code or visit
<https://DNEM.RecDesk.com> for more
information about adaptive cycling.

Provided in partnership with:



Sponsored by:

Consumers Energy

Count on Us[®]

Contact the Rec-Connect team at:



REC-IT@DNEMichigan.org
(586) 268-4160